

INSTRUMENTOS DIGITAIS (AC / DC)

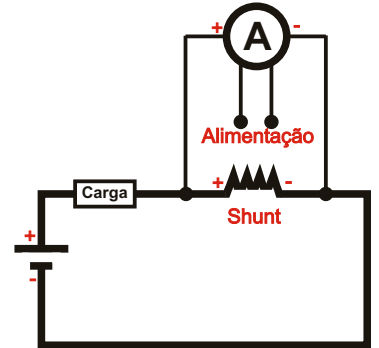
Voltímetro Digital (DC)



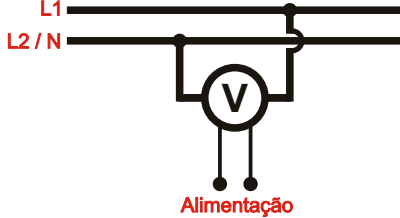
Amperímetro Digital (DC)



Amperímetro Digital (DC) ligado a Shunt



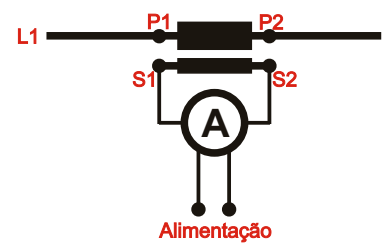
Voltímetro Digital (AC)



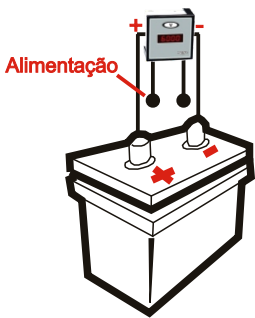
Amperímetro Digital (AC)



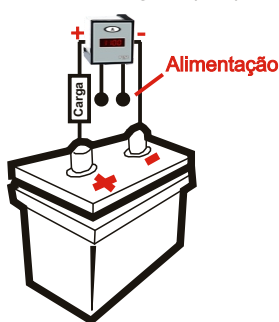
Amperímetro Digital (AC) ligado a TC



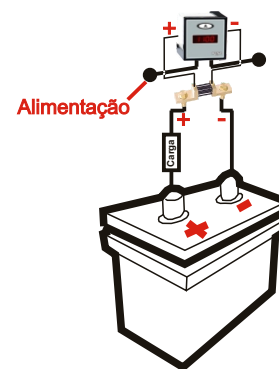
Voltímetro Digital (DC)



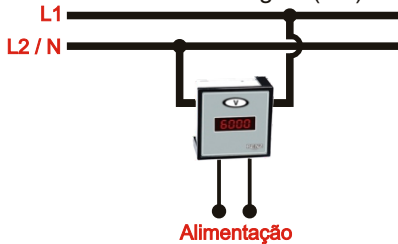
Amperímetro Digital (DC)



Amperímetro Digital (DC) ligado a Shunt



Voltímetro Digital (AC)



Amperímetro Digital (AC)



Amperímetro Digital (AC) ligado a TC

